

For Exchange Students

Information for Searching Courses

Please use the “Kdb” system to help you find the courses you want to take in the University of Tsukuba



Kdb Digital Syllabus for searching courses

<https://kdb.tsukuba.ac.jp/>

Please choose more than 8 courses in total, ideally 4 - 5 courses should be chosen from your first choice of desired School/Degree Program. This course selection information will be used to coordinate your affiliation.

日本語

Academic year* 202X ①

Term: Select Term/Module ② Weekday: Select Day Period: Select Period

Classroom: <Undecided> > <Undecided> > <Undecided> >

Course catalogue: Course Catalog for Undergraduate Students ③ > Foundation/Major Subjects > <Undecided> > <Undecided> >

Search words: OR AND

④ Include overview, remarks Include syllabi Conducted in English Courses open to auditor Courses open to Exchange student Except for not hold courses

Search Scrub

① Academic Year at UT

Information of the next academic year (April to March) will be offered at the beginning of April. Please search by most recent year

② Term/Module

Select Term/Module you plan to enroll in

③ Course catalogue

<For Undergraduate Students>

1. Select “Course Catalog for Undergraduate Students”
2. Select “Foundation/Major Subjects”
3. Select School and College

<For Graduate Students>

1. Select “Course Catalog for Graduate School Students”
2. Select Graduate School/Degree Program (and Subprogram if any)

④ Search Words

Check “Courses open to Exchange Student”
Check “Conducted in English” (if Japanese proficiency is poor.)

※“x” mark means that the course is not available.

日本語

Academic year* 202X ①

Term: Select Term/Module ② Weekday: Select Day Period: Select Period

Classroom: <Undecided> > <Undecided> > <Undecided> >

Course catalogue: Course Catalog for Graduate School Students ③ > <Undecided> > <Undecided> >

Search words: OR AND

④ Include overview, remarks Include syllabi Conducted in English Courses open to auditor Courses open to Exchange student Except for not hold courses

Search Scrub

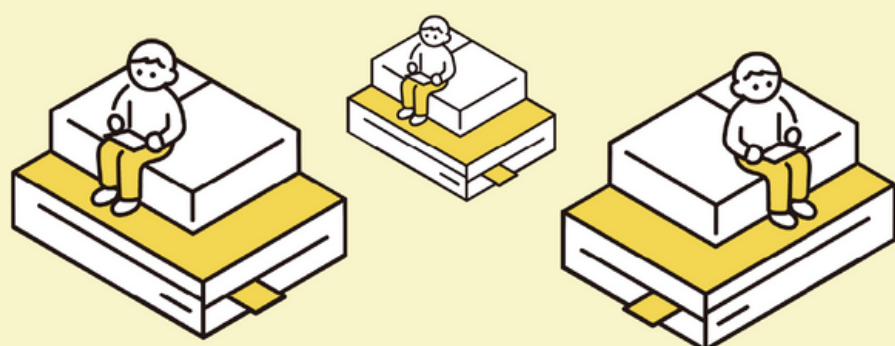
Course List: by Excel Download Courses list Download Syllabi

Display amount: 100 Transition

To download the list of courses, please navigate to the bottom of the webpage.

※Note

- The number of courses offered to exchange students may differ by each Schools/Programs.
- Official course registration will be done after arrival at Tsukuba. This course selection does not guarantee you can take those courses.
- As a general rule, courses marked with “x” are not available. However, if certain condition or requirements (e.g. Japanese proficiency) are met, you may be allowed to take them. Please contact lecturer during the period of registration, after arrival.



If you want to find the school and college or degree program at the University of Tsukuba, please refer to the lists below:

- List of Schools and Colleges (For Undergraduate Student)
- List of degree programs (For Graduate Students)

**Exchange student is unable to take the course offered by Degree Program in Business Sciences / Law School Program / MBA Program in International Business.